

Research Administration Forum XII

Marta I. Torruella, Associate Director, SR-PD
Amy Wilkerson, Associate Vice President, Research Support,
Frances Yee, Coordinator of Research Programs

Sponsored Research and Program Development

www.rockefeller.edu/sr-pd

March 14, 2012



Welcome

Agenda

- Introduction
- Research Centers
- Handling/Avoiding Delayed Submissions
- Funding Resources Primer
- Q&A
- Next ResAdmin Forum



SPONSORED RESEARCH AND PROGRAM DEVELOPMENT

www.rockefeller.edu/sr-pd/

THE ROCKEFELLER UNIVERSITY RESOURCE CENTERS

Exploiting them to the fullest

A presentation for
the SR-PD Administrative Forum
by Amy Wilkerson,
Associate Vice President, Research Support
March 14, 2012



The map shows the layout of Rockefeller University resource centers, with buildings color-coded and numbered 1 through 12. The map includes labels for 'New York Area Presbyterian Hospital and Weill Cornell Medical College' on the left, 'Franklin Delano Roosevelt Drive' and 'East River Esplanade' at the top, and 'East River' on the right. Street names '67th Street Gate', '68th Street Gate and Main Entrance', '63th Street Gate', '64th Street Gate', and 'East End Street' are marked at the bottom. A legend on the right lists the 12 resource centers with their locations and room numbers.

The Rockefeller University Resource Centers

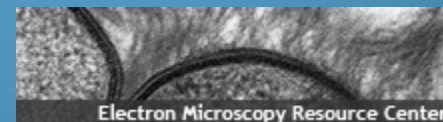
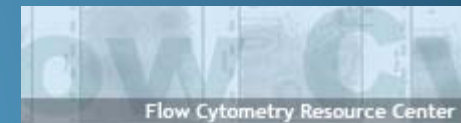
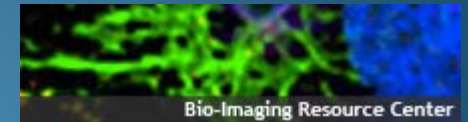
1 Bio-Imaging Resource Center Bronk Laboratory DWB Room 201 (office) DWB Room 202, 203 (Lab)	8 Monoclonal Antibody Core Facility Bronk Laboratory DWB Room 415
2 Electron Microscopy Resource Center Rockefeller Research Building RRB Room 120 (office) RRB Room 152, 154 (Lab)	9 Proteomics Resource Center Rockefeller Research Building RRB Room 157b (office) RRB Room 157 (Lab)
3 Flow Cytometry Resource Center Bronk Laboratory DWB Room 205 (office) DWB Room 207, 211 (Lab)	10 Spectroscopy Resource Center Bronk Laboratory DWB 908A (office) a Rockefeller Research Building 600 NMR lab: RRB Room 341 b Theobald Smith Hall 400 NMR lab: TSH Room S509
4 Gene Targeting Resource Center Bronk Laboratory DWB Room 701 (office) DWB Room 703 (Lab)	11 Structural Biology Resource Center Rockefeller Research Building RRB Room 143A (office) X-ray machine: RRB Room 327 Central location: RRB Room 363
5 Genomics Resource Center Weiss Research Building WRB Room 721 (office) WRB Room 725 (Lab)	12 Transgenic Services Resource Center Collaborative Bioscience Center CBC Room 542 (office) CBC Room 544-546 (Lab)
6 Glasswashing Services Resource Center Collaborative Research Center CRC - Greenberg Building - C level Room CO2E	
7 High Throughput Screening Resource Center Bronk Laboratory DWB Room 216	

Why does the University have resource centers?

- Reduces overall institutional costs through centralizing services
- Reduces duplication of expensive equipment and expertise
- Provides services that are not available commercially or that are prohibitively expensive from commercial sources
- Allows for recruitment and retention of personnel with specific technical expertise
- Provides continuity of key services or products
- Facilitates collaboration between researchers
- Contributes to University training mission

What Centers do we have on campus?

- Bio-Imaging
- Comparative Biosciences Center
- Electron Microscopy
- Flow Cytometry
- Gene Targeting
- Genomics
- Glasswashing
- High Throughput Screening
- Instrument Shop
- Library
- Monoclonal Antibody Core Facility
- Proteomics
- Spectroscopy
- Structural Biology
- Transgenic Services



What off campus Centers do we have priority access to?

- New York Structural Biology Center
- Beamlines
- Genetically Engineered Mouse Phenotyping Core
- WCMC CBIC

How do researchers use the Centers?

- Products, data, data analysis
- Training
- Access to instruments
- Consultation
- Collaboration

On line scheduling and access options

- BIRC - on line scheduling (instruments and training) and remote access for users; on line access for lab admin to invoices and PTAE0 list
- EMRC - on line scheduling for instruments
- FCRC - on line scheduling for instruments and training; data access via CFS
- GRC - on line Gene Spring booking; access to analyzed deep DNA sequencing data via CFS
- HTSRC - on line scheduling for training and instrument access
- Library – on line access to e-journals, chat, and NIH PubSubmit; on line journal/book request
- MACF – Registration for users required; PI approval is required for registration. Registration allows user to see pricing and services. Order confirmation sent to PIs
- Proteomics – User instrument operational status
- Spectroscopy – on line scheduling for NMRs
- Structural Biology – on line scheduling for instruments and tools

How do researchers pay for the Center services?

- Internal transfers against identified PTAEOs
- Tracked and reported by individual Centers
- Fees assessed for delivered services/products only
- No prepayment

Referencing Centers in grant applications

- Strengthens grant applications
- Boilerplate descriptions available on line
- Grant specific descriptions, letters of support available from directors/managers
- Usage fees should be included in budgets
- Centers to be utilized in support of the grant need to be listed on the routing form
- Collaboration and/or listing Center directors as personnel on a grant requires approval from Center director and from VP Academic Affairs if director is listed as personnel

Referencing Centers in publications and presentations

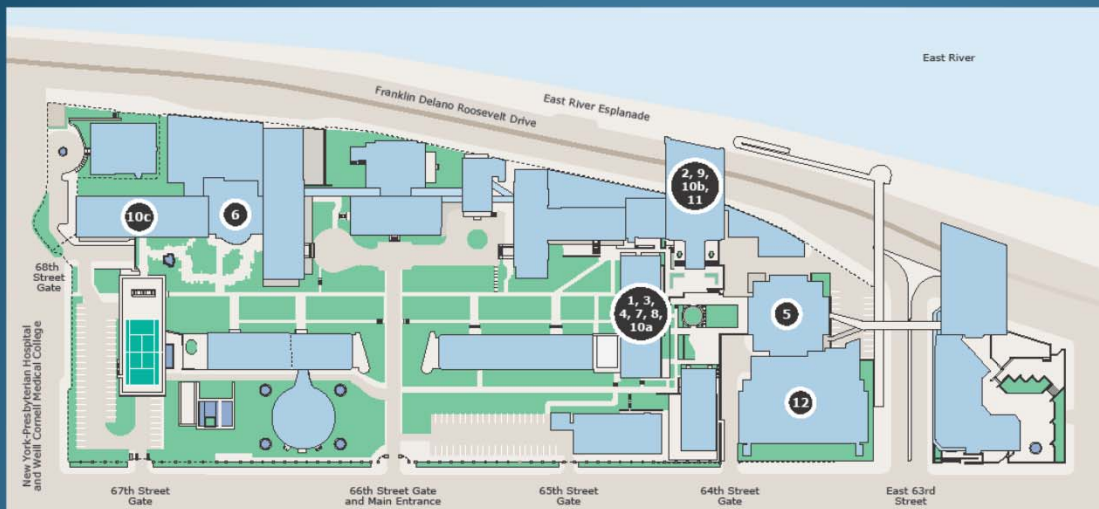
- In keeping with academic standards
- Condition of use of certain grant/gift funded instruments
- Condition of an increasing number of publications
- Important metric on usefulness of Centers
- Strengthens University position when seeking instrumentation grants or gifts

How do I find out more about the Centers?

- Websites (<http://inside.rockefeller.edu/rc/>)
- Presentation series
- Orientation for new students
- Visit them
- Talk to the directors/managers

Have comments or questions about Centers?

- Talk to the Center director/manager
- Talk to me or Ravi Tolwani
- Talk to John Tooze
- Talk to a member of the Scientific Advisory Committee
- Submit comments via e-suggestion box



The Rockefeller University Resource Centers

- | | |
|--|---|
| <p>1 Bio-Imaging Resource Center
Bronk Laboratory
DWB Room 201 (office)
DWB Room 202, 203 (Lab)</p> <p>2 Electron Microscopy Resource Center
Rockefeller Research Building
RRB Room 120 (office)
RRB Room 152, 154 (Lab)</p> <p>3 Flow Cytometry Resource Center
Bronk Laboratory
DWB Room 205 (office)
DWB Room 207, 211 (Lab)</p> <p>4 Gene Targeting Resource Center
Bronk Laboratory
DWB Room 701 (office)
DWB Room 703 (Lab)</p> <p>5 Genomics Resource Center
Weiss Research Building
WRB Room 721 (office)
WRB Room 725 (Lab)</p> <p>6 Glasswashing Services Resource Center
Collaborative Research Center
CRC - Greenberg Building - C level Room CO2E</p> <p>7 High Throughput Screening Resource Center
Bronk Laboratory
DWB Room 216</p> | <p>8 Monoclonal Antibody Core Facility
Bronk Laboratory
DWB Room 415</p> <p>9 Proteomics Resource Center
Rockefeller Research Building
RRB Room 157B (office)
RRB Room 157 (Lab)</p> <p>10 Spectroscopy Resource Center
a Bronk Laboratory
DWB 908A (office)
b Rockefeller Research Building
600 NMR lab: RRB Room 341
c Theobald Smith Hall
400 NMR lab: TSH Room S509</p> <p>11 Structural Biology Resource Center
Rockefeller Research Building
RRB Room 143A (office)
X-ray machine: RRB Room 327
Central location: RRB Room 363</p> <p>12 Transgenic Services Resource Center
Collaborative Bioscience Center
CBC Room 542 (office)
CBC Room 544-546 (Lab)</p> |
|--|---|

Handling/Avoiding Delayed Submissions

Marta I. Torruella, CRA
Associate Director

Sponsored Research and Program Development

www.rockefeller.edu/sr-pd

March 14, 2012



Handling/Avoiding Delayed Submissions

- Planned Submissions – Communicating Early
 - Tracking Log
 - Updates/changes
- Being Pro-Active
 - Sending Application Review Requirements
 - Going over special guidelines
- Optimizing Services
 - Involving others at SR-PD (GMSs, PD)
 - Providing Checklists – sharing info
 - Getting institutional letters early
 - Anticipating possible issues



Grant Funding Databases

Frances Yee, PhD
Coordinator of Research Programs

Sponsored Research and Program Development

www.rockefeller.edu/sr-pd

March 14, 2012



Program Development Services

- [Grant Seeking](#) resources
- Weekly funding alerts
- RU [Funding Database](#)
- Community of Science (COS) [Pivot](#)
- [NIH Guide for Grants & Contracts](#)
- [National Science Foundation](#) (NSF)
- Other Funding Databases – [grants.gov](#), [Duke University Funding Opportunities](#), [InfoEd Sponsored Programs Information Network](#) (SPIN), [The Foundation Center](#)



SPONSORED RESEARCH AND PROGRAM DEVELOPMENT

www.rockefeller.edu/sr-pd/

Funding Search Tips

- Use general (non-technical) terms for keyword searches
- Use *Advanced Search* fields (e.g. citizenship, activity location) to refine/limit results
- Consider potential disease relevance of research project
- Repeat funding searches periodically (e.g. biweekly, monthly)



Funding Programs by Career Stage

- [New Investigator Programs](#)
- [Postdoctoral Fellowships](#)
- [Predocctoral Fellowships](#)
- [Non-US Citizen Funding Resources](#)



SPONSORED RESEARCH AND PROGRAM DEVELOPMENT

www.rockefeller.edu/sr-pd/

Questions



SPONSORED RESEARCH AND PROGRAM DEVELOPMENT

www.rockefeller.edu/sr-pd/